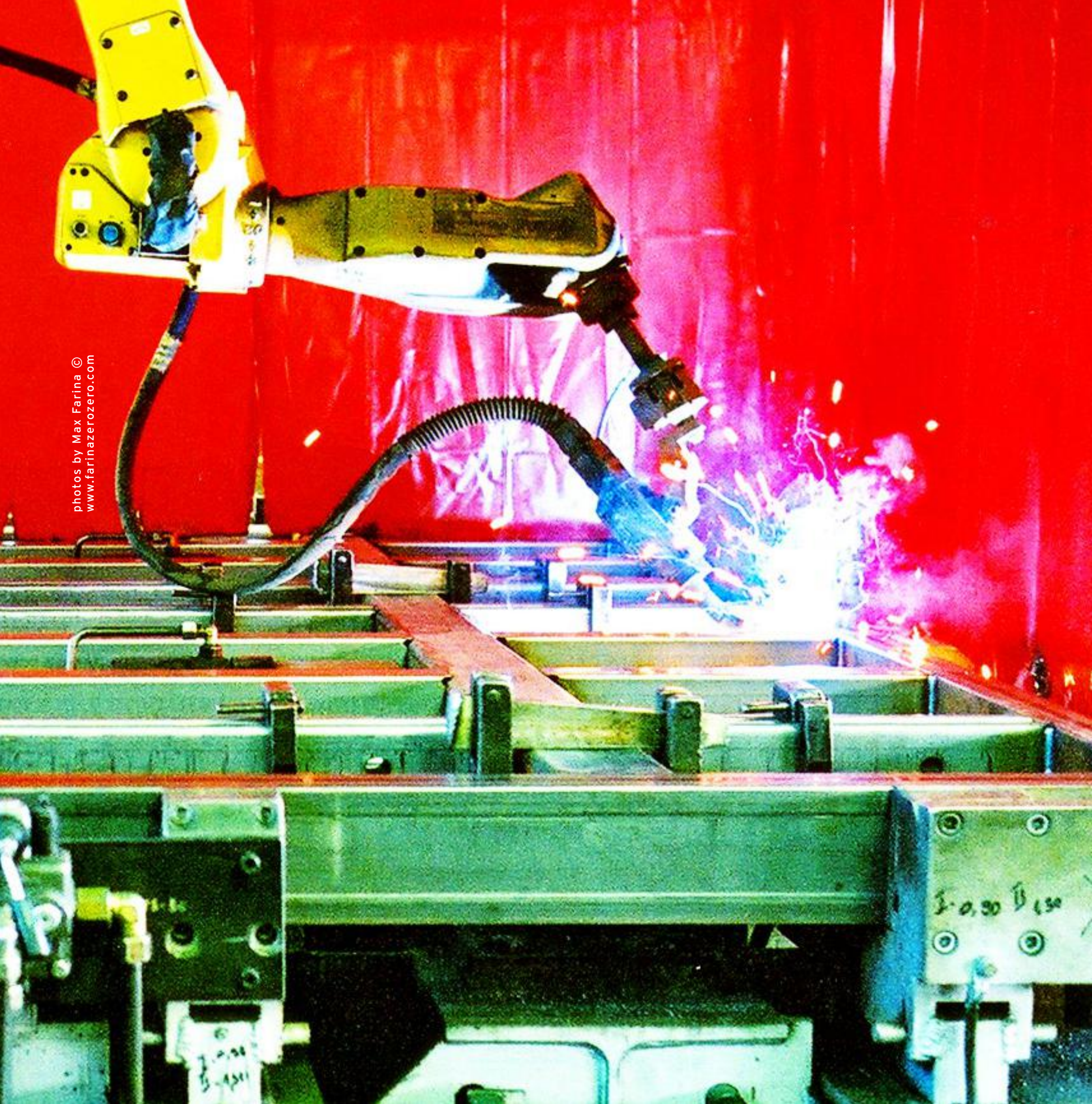




forms for your ideas

All the Formworks
start from here





photos by Max Farina ©
www.farinazerozero.com

S U M M A R Y

OUR TRADITION OF EXPERTISE AND QUALITY	4
OUR FACILITIES AND PRODUCTION PLANT	8
OUR KNOW-HOW AT YOUR SERVICE	10
OUR WORLDWIDE ATTITUDE	12
VERTICAL FORMWORK SYSTEMS	14
COMPLEMENTARY SYSTEMS	18
HORIZONTAL FORMWORK SYSTEMS	20
OUR SITE REFERENCES	22

OUR TRADITION OF EXPERTISE AND QUALITY

The Formwork is one of ELG Steel Group companies, an Italian group with iron metallurgy as its core business. Mainly focused in manufacturing formwork systems, The Formwork provides technical solutions for the construction industry.

OUR STORY

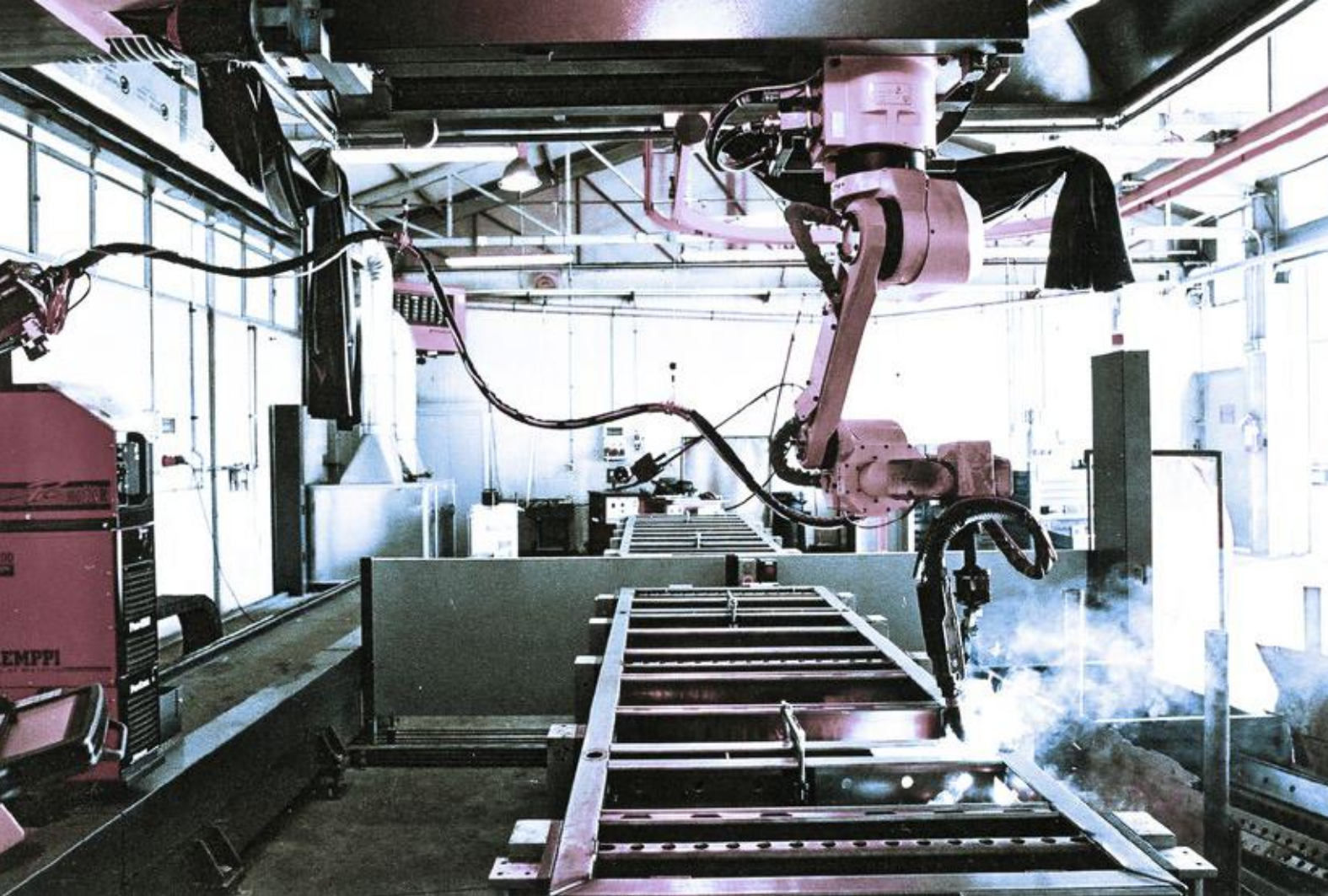
1980

Farina Formwork Company was established: expertise and capability in steel carpentry, together with quality and an outstanding care for every detail were its widely recognized trade mark since the start of production.

2010

The Formwork took over Farina Formwork Company, maintaining the original production structure and staff. Moreover **The Formwork** added a synergistic management of production, taking advantage of ELG Group activities, other than increased a worldwide market approach, inserting a new management spirit.





Up to date

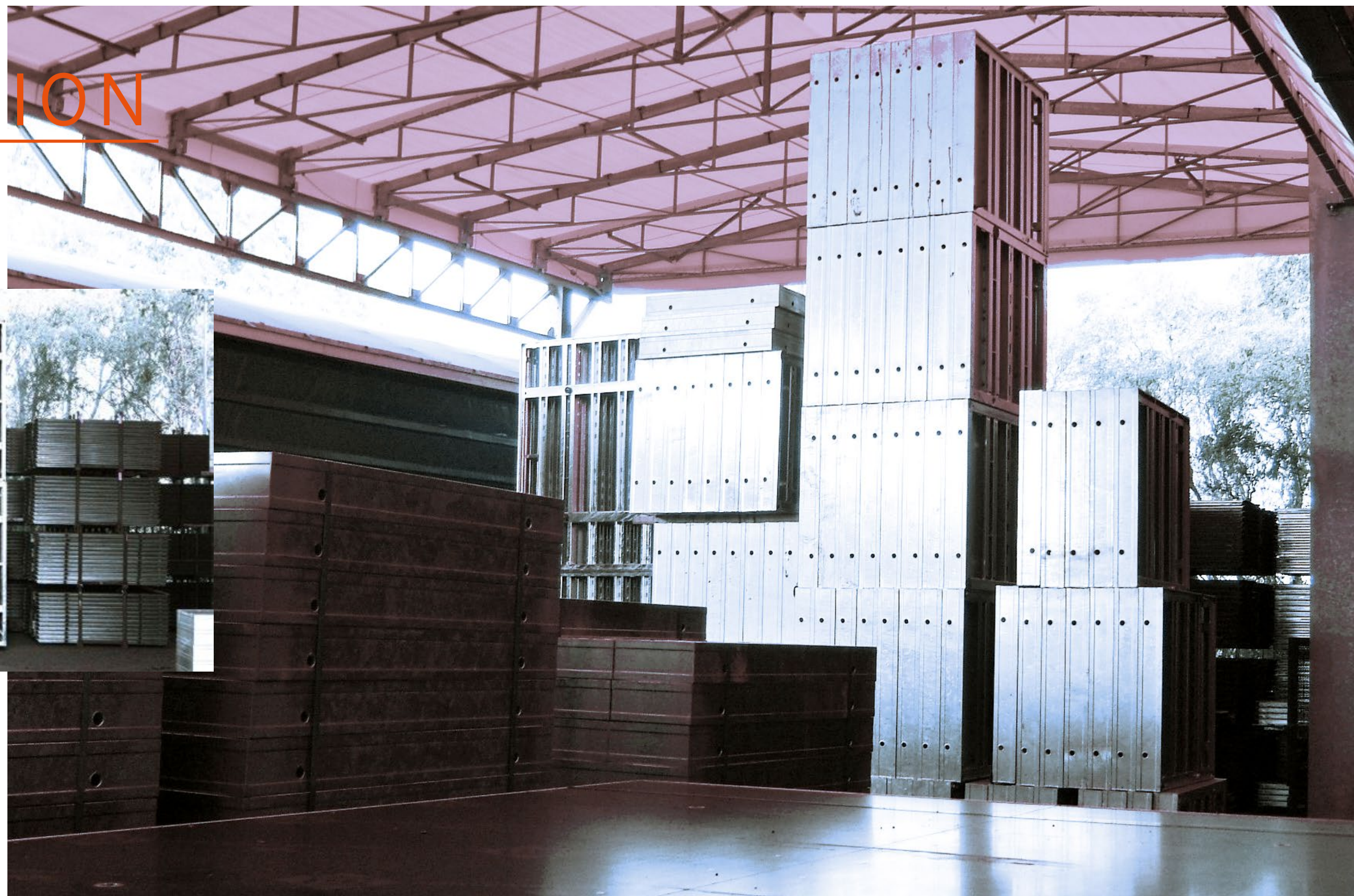
Improving the products range and efficiency, in order to match the specific market request from all over the world, is one of **The Formwork**'s main tasks. Even with a lean structure, and actually taking advantage of it to guarantee the flexibility requested by customers and markets, **The Formwork** can satisfy the most demanding customers and projects needs.

OUR FACILITIES AND PRODUCTION PLANT

*Smartly positioned in Milan's suburbs, **The Formwork** has a perfect logistic position in the middle of Pianura Padana, one of the most productive industrial areas, with all the benefits deriving from the proximity of company partners and infrastructures net.*



Production lines, offices, and any internal process are located at the Headquarters in San Donato Milanese. The plant is tested for the most intensive working rhythm, often organized in two working shifts per day, to increase the productivity. The closeness of production, technical and commercial departments, ensures the most effective results in developing new products, improving the existing ones, testing the whole systems.



OUR KNOW-HOW AT YOUR SERVICE

We are able to support you from tender stage trough all construction processes up to site operations.

Following tasks are our daily job:

- Tender offers with feasibility study
- Formwork related chronoprogram with working cycles and workforce
- Optimized formwork equipments dimensioned for the specific projects
- Method statements and site assistance
- Final shop drawings
- Site assistance (safety, live problem solving, material and workforce costs reduction)
- Site supervision (safety, chronoprogram respect, productivity)



OUR WORLD WIDE ATTITUDE

Costa Rica
Residential &
Commercial

Residential
Dublin

Cav.To.Mi.
Italy

Social
Housing
Bucharest

Jeddah Plant
Saudi Arabia

Barangaroo
Australia

Center Forum
South Africa
Johannesburg

The **Formwork** has a clear worldwide attitude, confirmed by a constant presence and activity around the world. No borders exist in our business, and all differences in construction methods we found around the globe, have been a further help to improve our products and processes, transforming any request and suggestion from customers and markets in an input to speed up the R&D work, refine our products range and our company processes development.

VERTICAL FORMWORK SYSTEMS

DESTIL MINI

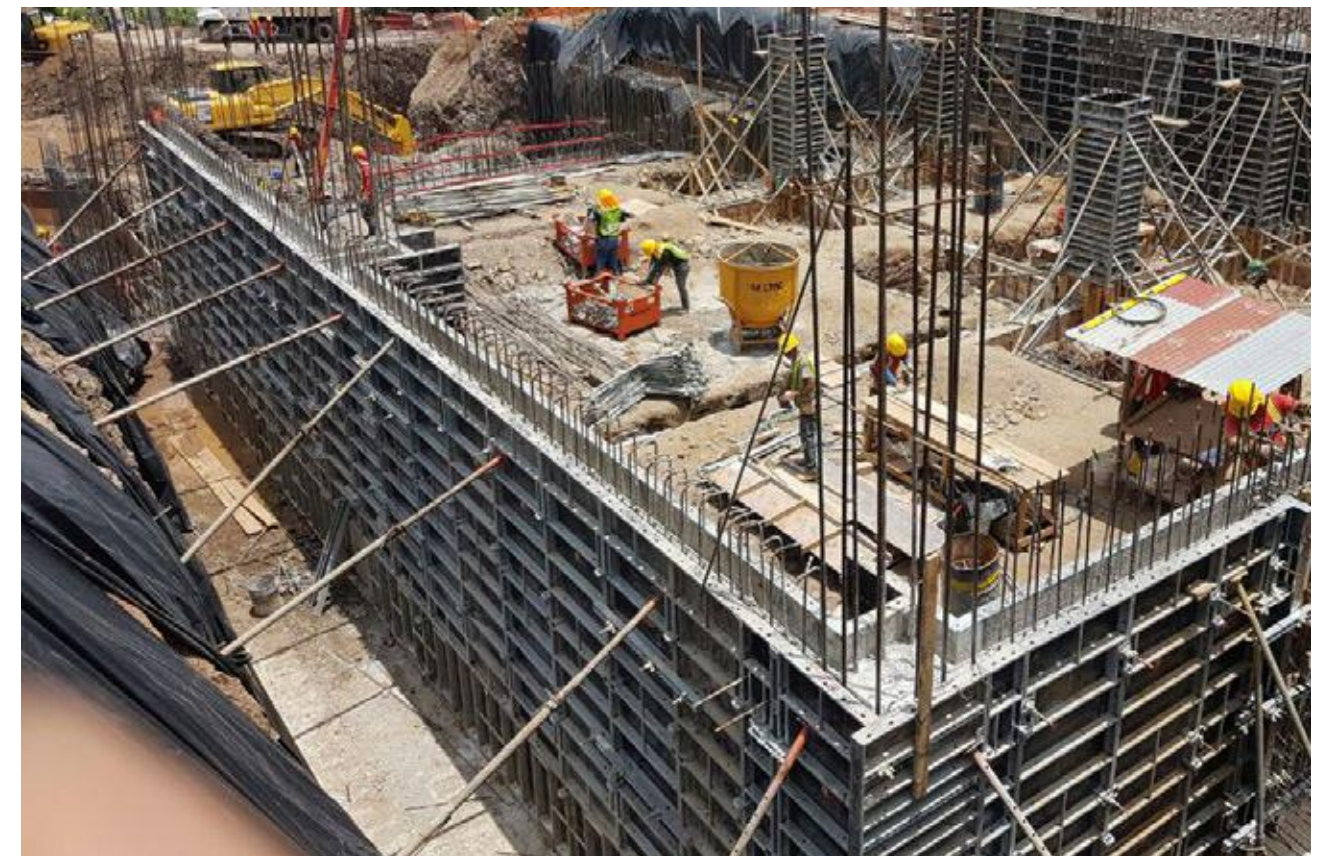
Modules have widths from 0.30 to 0.90 m and heights of 3.00, 2.70, 1.50 and 1.20 m, to match any construction need.

The panel of 0.75 X 3.00 has a weight of 70 Kg. Profiles are hot dip galvanized, in high strength S355MC steel, with a surface of 15 mm thick Finnish birch plywood, with a 220 g/sqm phenolic coating or plastic coating on request.

Destil Mini is The Formwork most ergonomic vertical system, due to its reduced weight. Any concrete structure will be an easy task with **Destil Mini**, the ideal system for medium to small construction sites.



*It's the latest task of **The Formwork** R&D department: a light steel frame formwork, handset and therefore avoiding the use of crane and maintaining a high flexibility, thanks to its modularity.*



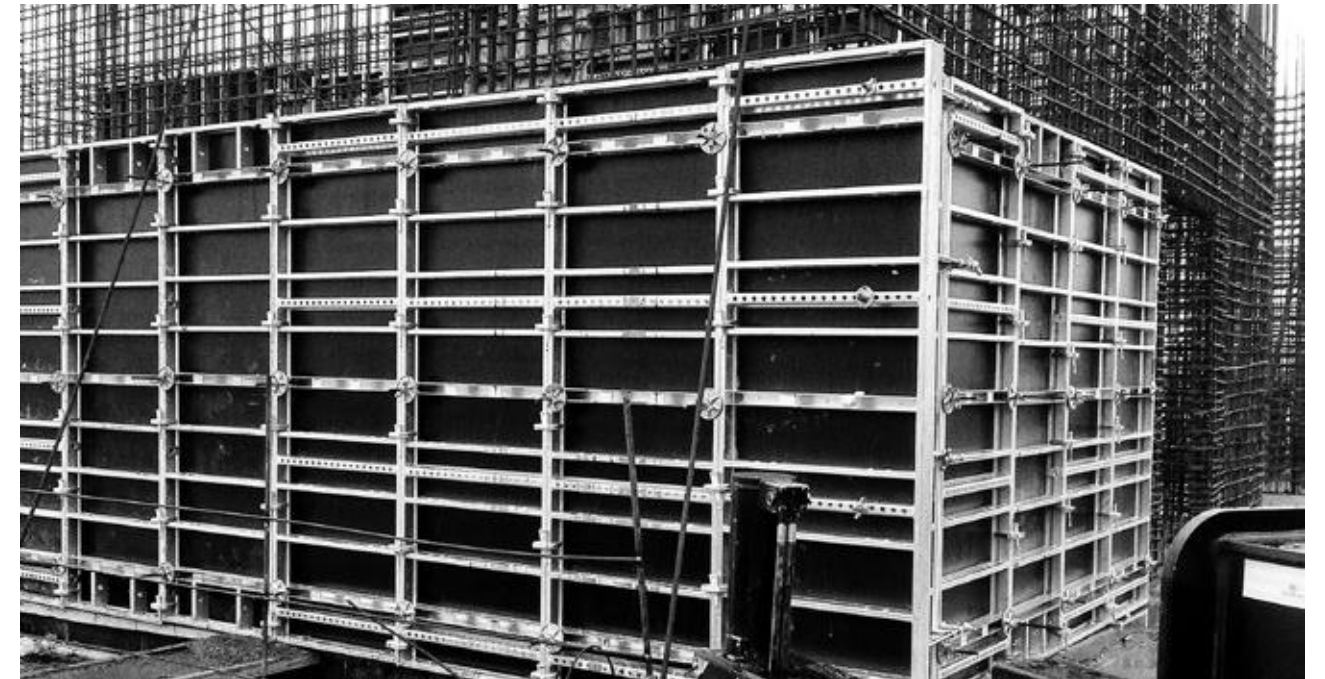


DESTIL

It's a steel frame formwork extremely strong and flexible, thanks to a minimum quantity of components, for a quick assembling and handling on site.

Modules have widths from 0.30 to 2.40 m and heights of 3.30, 3.00, 2.70, 1.35 and 1.20 m. Profiles are hot galvanized, high strength S355MC steel, with a surface of 18mm thick Finnish birch plywood with a 220 g/sqm phenolic coating or plastic coating on request.

Destil is our top product, given its high resistance to concrete pressure up to **80 kN/m²**. Any site, walls or column, are not a problem with Destil.



DESTIL 2

Destil 2 is a light formwork, perfect for residential projects. Modules have widths from 0.30 to 1.00 m and heights of 3.00 and 1.50 m.

The system offers high performance, with an allowable concrete pressure of **60 kN/m²**, thanks to hot-dip galvanized high strength S355MC steel and 18mm thick Finnish birch plywood with a 220 g/sqm phenolic coating or plastic coating on request.

As per Destil, Destil 2 solves brilliantly any vertical manufacture as walls and columns.

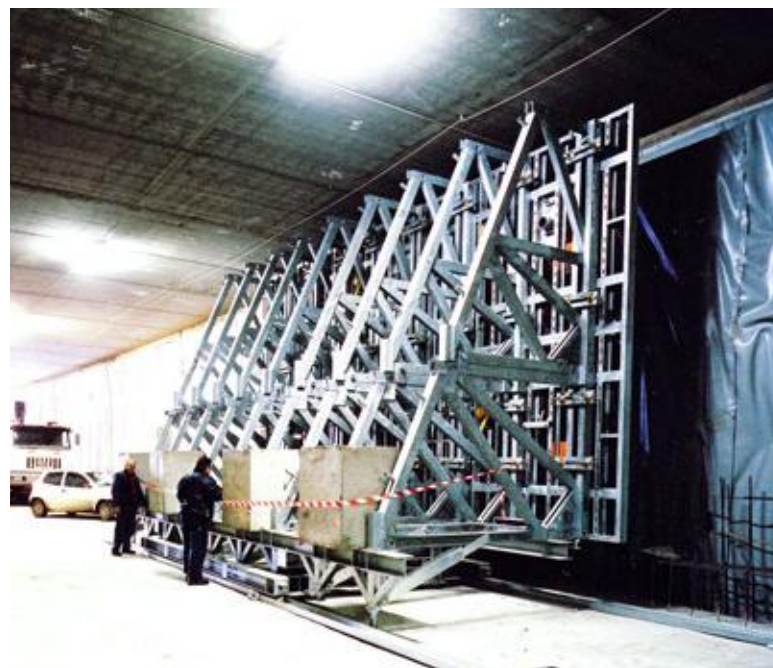


COMPLEMENTARY SYSTEMS



DESTIL SINGLE SIDED

As per the climbing system, Destil supporting frames can serve any of **The Formwork** vertical system. Its reliability permits to execute any single sided pouring, up to 8.00 m, in a safe and quick way. **The Formwork** technical department can solve any need, defining the best compromise between site needs, safety and efficiency. Its strength and versatility permit also special applications, for specific engineering solutions.



DESTIL CLIMBING

Any of **The Formwork** vertical system can be coupled with the climbing system that, thanks to its strong and safe components, guarantees a fast and safe proceeding of pouring, without any need for scaffolding. Its internal shaft system completes the gamma and permits a perfect solution, in order to avoid any additional system and assuring the foreseen working cycles.



TF 10 BIG AREAS

TF 10 is the "beams formwork system" which allows to easily adapt its modularity to geometrical and architectural project specifications. Infrastructural projects, heavy pouring pressure as the ones coming from use of SCC (self compacting concrete), "fair faced" concrete surfaces, particularly complex geometrical design, will be brilliantly supported by a careful system planning of **The Formwork** tech. dept. The system wide flexibility and its accessories gamma meet even the most geometrical complex project specs, and permit an easy "coupling" of system modules with dimes, rubber matrix etc... in order to achieve any requested form with any kind of surface, also by the "free choice" of sheet coating to meet the requirements.

TF 10 works smoothly with all **The Formwork** complementary systems as Single Side Supporting Frames and Climbing Brackets, other than acts as "slab deck system" in combination with **TF shoring system** as **TF Quick Slab Table**, **TF 2 shoring towers** and **TF Alu-Towers**.



HORIZONTAL FORMWORK SYSTEMS

DESTIL DECK

A light and flexible drop head modular slab system, offering two different applications, as grid system and alu-panels; therefore ideal for any slab construction methods. A hand-set formwork with high-strength aluminum main beams, steel grids with max 15.00 kg for heaviest components, drop heads for an early striking and fast advancement of equipment. A modern and easy to use system, representing the top of the gamma solution, a perfect investment for construction companies, with the best compromise in quality and costs.



TF QUICK SLAB TABLE

TF Quick Slab Table is the ideal solution for projects presenting a regular geometry. No other system can offer such a fast and easy shoring. The large covered area up to 12.5 sqm per unit, the smart tilting heads and all accessories are a guarantee for a safe and fast working cycle. Its easiness avoids any need for particular training, given a preliminary detailed planning, done with the necessary expertise by **The Formwork** technical department.



TF2

Three main application areas: slab tables, heavy duty (60 kN per leg) shoring towers and stair towers. Easy to use: three steel frame sizes and related bracings, foot spindles, jack heads and connecting accessories, for a strong, long lasting system, easy to use and able to support even the heaviest loads.



ALU TOWER

Composed by heavy duty aluminum props ensuring a high loadability and connecting frames, increasing the stability at relevant heights. Flexible and easy to assemble, it offers a high quality solving the most demanding slabs typology, i.e. massive loads at high levels.

RESIDENTIAL CONSTRUCTION



SYSTEM USED

VERTICALS:
- DESTIL MINI

SERVICES:

EQUIPMENT OPTIMIZATION,
SITE ASSISTANCE

COSTA RICA

San Jose, Santa Ana - Solaris

High quality residential complex. Construction company Bilco had compelling requirements regarding a high surface finishing quality and a massive production, to be executed by weekly cycles.





Ireland - Dublin

Housing neighborhood completion
TF systems supplied

Verticals:

- Destil Framed formwork

Horizontals:

- TF H20



Ukraine - Kiev

Housing development
TF systems supplied

Verticals:

- Destil Framed formwork

- Destil Climbing

- Shaft system

Horizontals:

- TF H20



Romania - Bucharest

Social Housing

Verticals:

- Destil Framed Formwork

- Destil Climbing

Horizontals:

- TF H20



Bulgaria

Residential development for multi storey buildings with standard structure of in situ poured columns, slabs and cores.

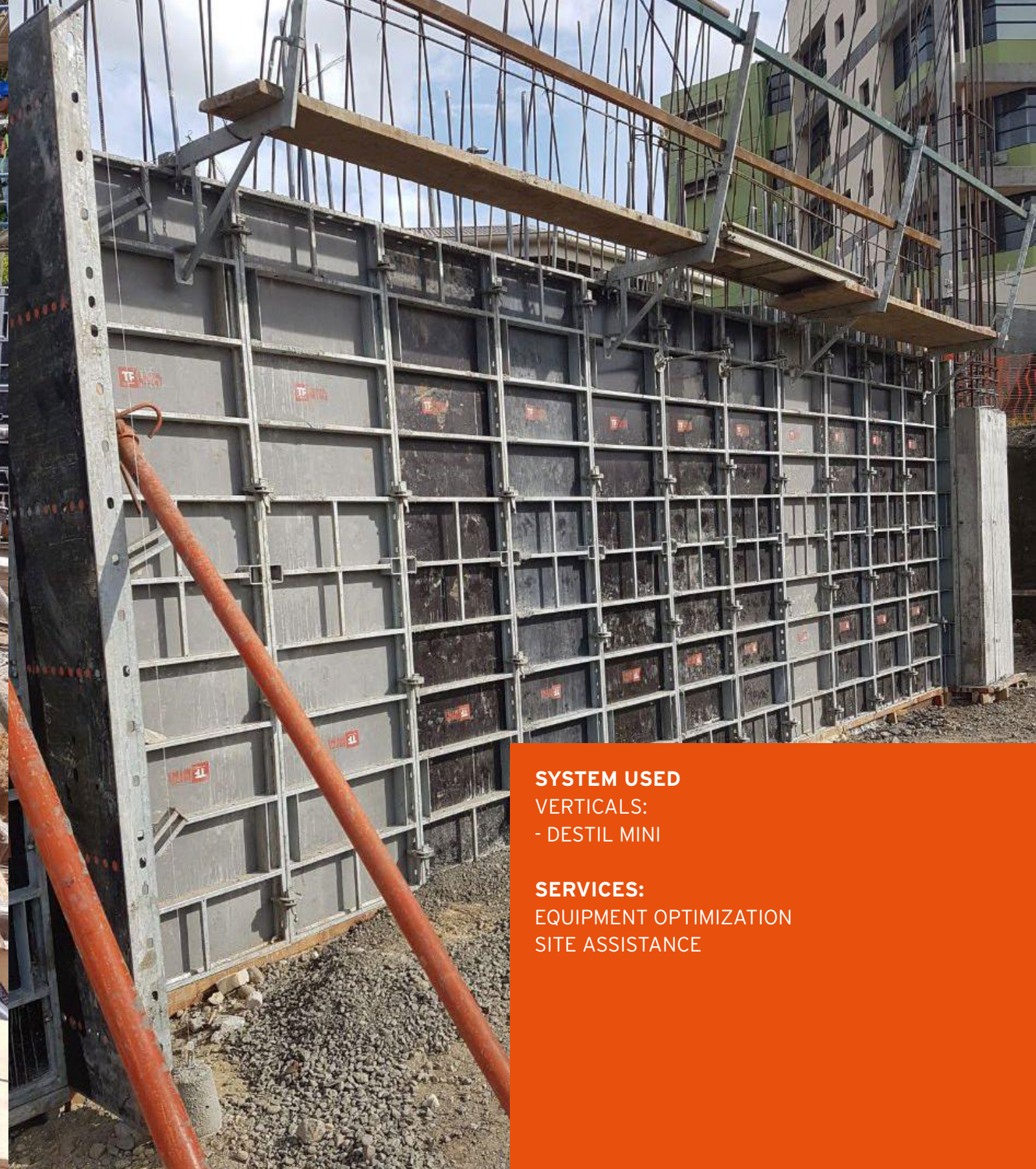
Verticals:

- Destil Columns

- Destil Framed Formworks



COMMERCIAL CONSTRUCTION



SYSTEM USED

VERTICALS:
- DESTIL MINI

SERVICES:

EQUIPMENT OPTIMIZATION
SITE ASSISTANCE

COSTA RICA

Naranjo Alajuela - Maxi Pali Naranjo

Commercial buildings.

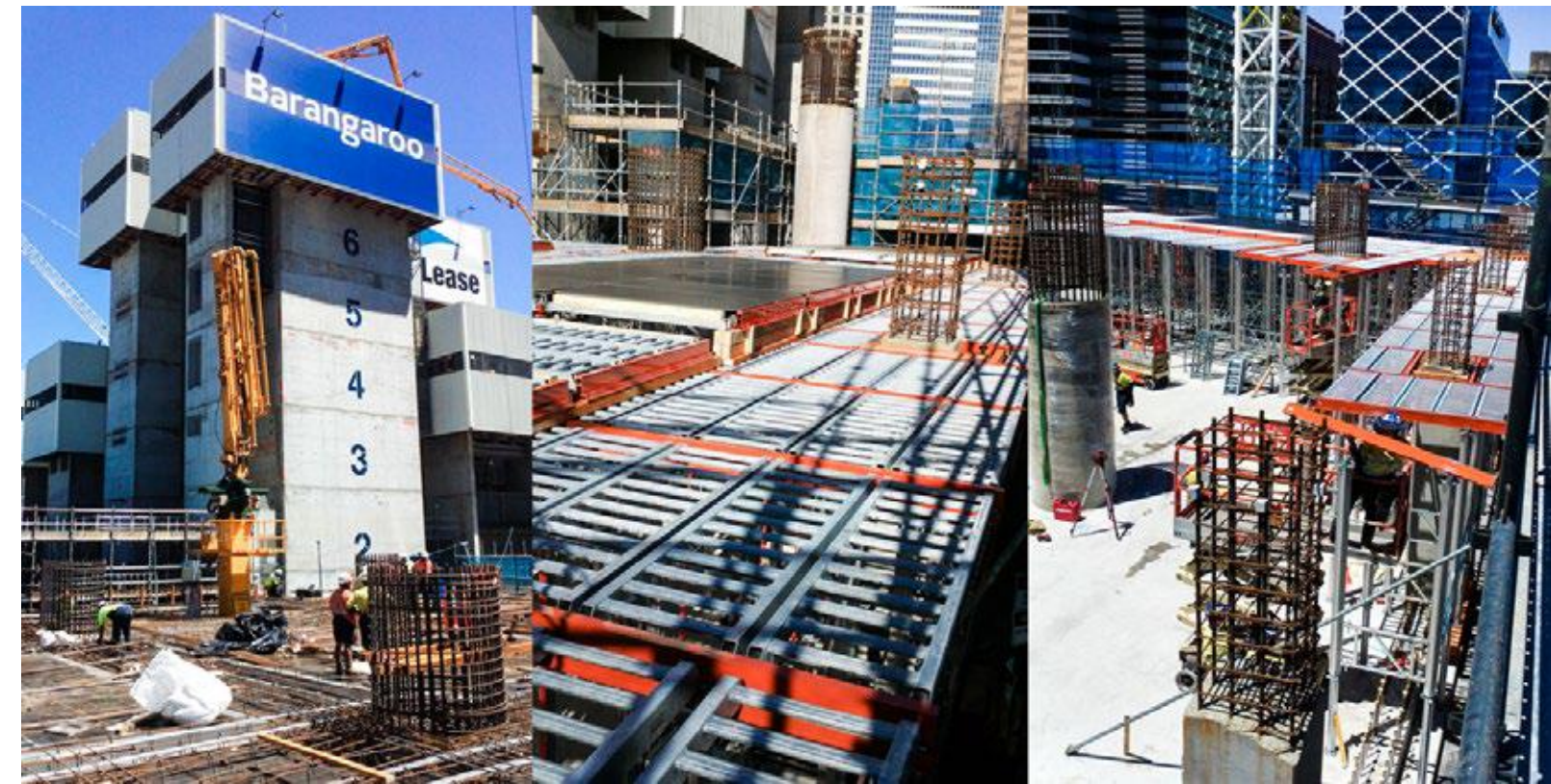


Australia - Sydney

Barangaroo

Horizontals:

- Destil Deck for "size contained" areas
- TF "Custom" Slab Table for bigger ones





South Africa - Johannesburg

Center Forum Re-Development TF systems supplied

- Horizontals:
- Destil Deck
- Modular slab system



Italy - Milan

Multifunctional buildings TF systems supplied

- Verticals:
- Destil Framed formwork
Horizontal:
- TF 2 shoring towers
- TF 10 deck



INFRASTRUCTURES

ITALY MILAN/TURIN High capacity railway

CAV.TO.MI.

High Capacity Railway Project.
First segment between Milan and Turin

SYSTEM USED

VERTICALS:

- DESTIL FRAMED FORMWORK
- CUSTOM MADE FORMWORKS

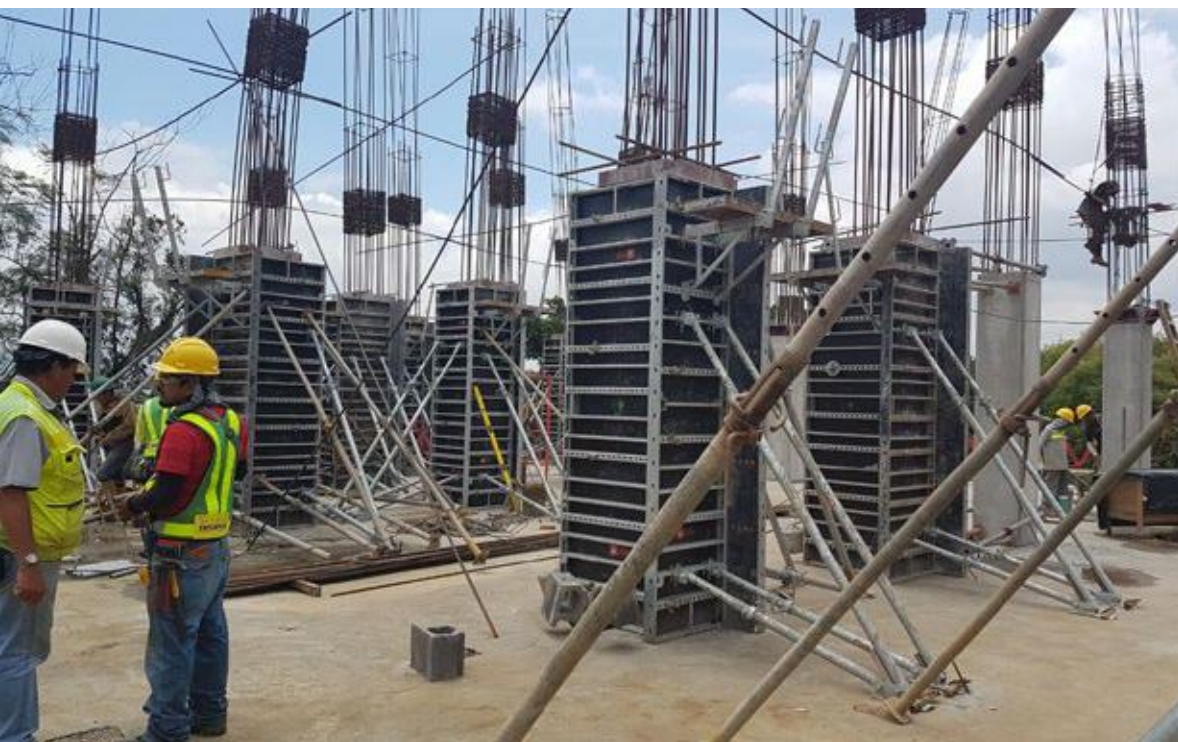
HORIZONTALS:

- TF 2 SHORING TOWERS
- TF 10
- DECKS

SERVICES:

EQUIPMENT OPTIMIZATIONS
POURING PHASES PLANNING
SITE ASSISTANCE & SUPERVISION





Costa Rica San Pedro, San Jose

**Multi storey building
AA205 of Public University
in San Jose.**

Verticals:
- Destil Mini
- TF H20



Italy - Modena

Artificial Tunnel | highway Thiene-Schio

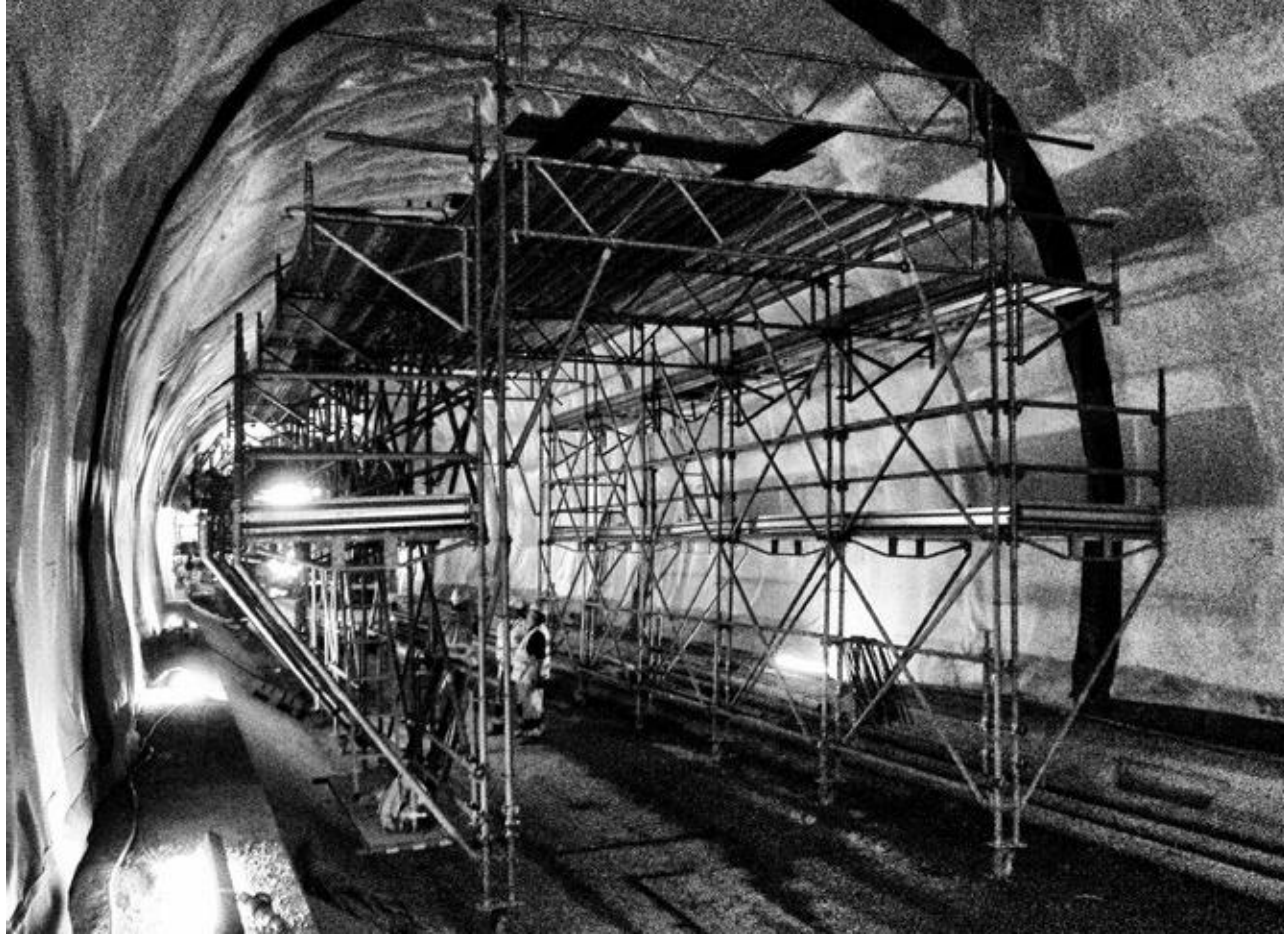
TF systems supplied:

Tunnel Formwork

Custom made single side application

Dimed TF 10





Italy, Modena High Capacity Railway Milan-Bologna

Interference works to
High Capacity Railway Milan-Bologna,
artificial tunnel in Modena.

- Tunnel Formwor
- Custom made single side application
- Dimed TF 10



Switzerland

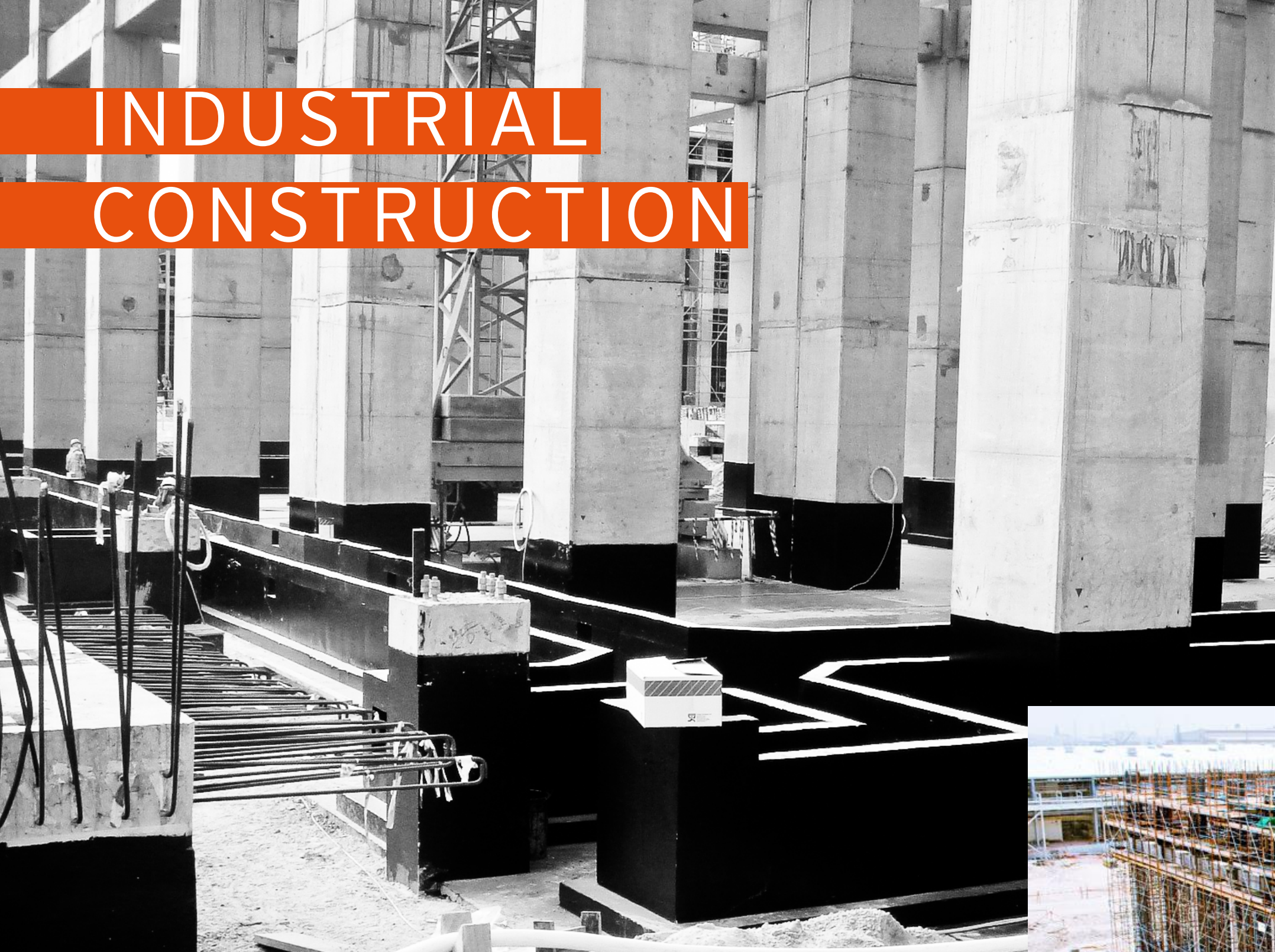
New Railway Tunnels

TF systems supplied:

Reinforcement laying Wagon
made by multidirectional shoring system



INDUSTRIAL CONSTRUCTION



SYSTEM USED

VERTICALS:

- DESTIL FRAMED FORMWORK &
- DESTIL CLIMBING

HORIZONTALS:

- TF 2 SHORING TOWERS & TF 10 DECK

SERVICES:

EQUIPMENT OPTIMIZATIONS
POURING PHASES PLANNING
SITE ASSISTANCE & SUPERVISION

PLANTS IN JEDDAH

Middle East

Destil framed panels and TF2 towers were used satisfactorily in the following projects:

- Saudi Kayan HDPE project in Al-Jubail industrial district.
- Jubail Export Refinery (JER P#3)

SATORP in al-Jubail 2 industrial zone.

- Rabigh Power Plants stages 5,7,&2 for SEC.
- Yanbu Export Refinery, (YERP4).
- Borouge LDPE project @Ruwais



Nigeria - Niger Delta

Oil & Gas Plant

TF systems supplied

Verticals:

- Destil Framed formwork
- Destil Climbing - Shaft system

Horizontals:

- TF H20



Algeria - Internal area

Industrial Plant

TF systems supplied

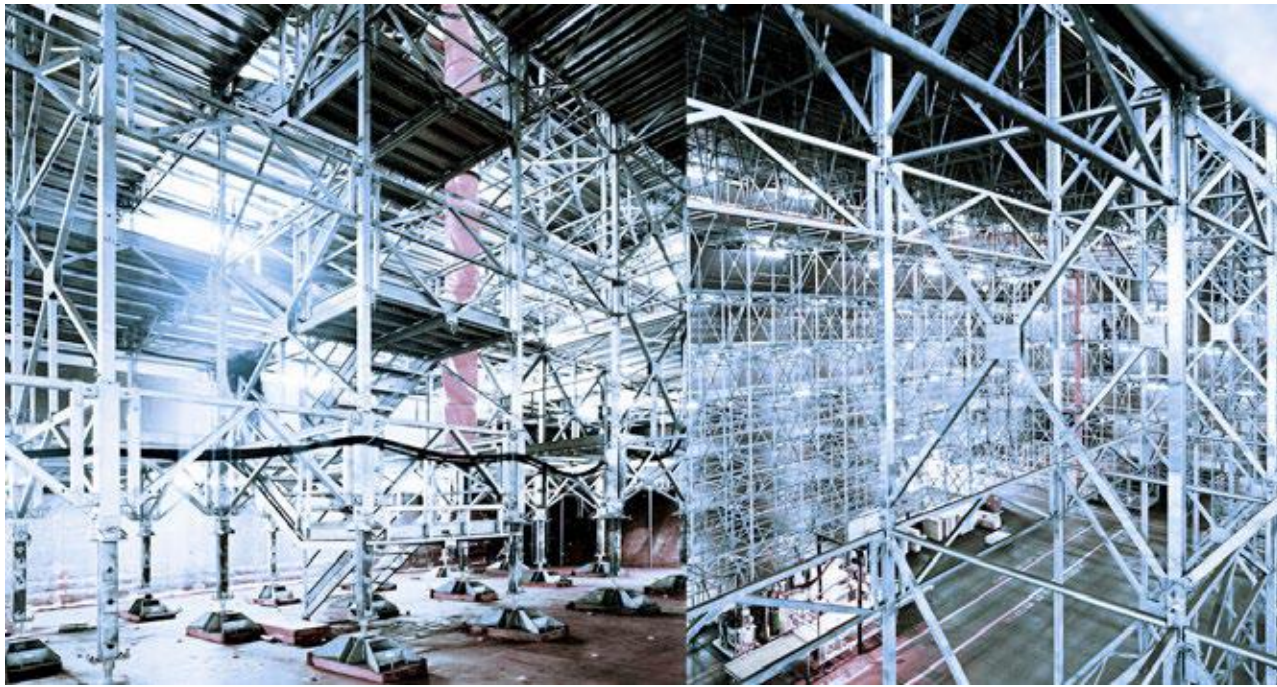
Verticals:

- Destil Framed formwork

Horizontals:

- TF H20





Spagna Harbour Industrial Site

**Custom made engineering solutions
of multidirectional shoring system.**

Customized Shoring System

SERVICES:

Continuous engineering support for
the whole project duration



THE FORMWORK

Via Achille Grandi, 7
20097 San Donato Milanese (MI)
T. +39.02.52.75.829
F. +39.02.55.60.02.91

info@theformwork.it
www.theformwork.it

INTERNATIONAL PARTNERS

MOROCCO - GALISEC MAROC SARL
29 Avenue Abtal Agdal, Rabat
T. 0537681265
F. 0537681264
hassan.fahim@galisec.com

CANADA
NIPPER FORMWORKS INC.
#115, 1925 - 18th Avenue. NE
Calgary, AB T2E 7T8
T. 587-775-8875 | TF: 1 855-775-8875 FREE
info@nipperformworks.com
www.nipperformworks.com

AUSTRALIA
FOWLER SALES AND HIRE
Hoists - Scaffolding - Formwork 9 Walker Place Wetherill Park NSW 216
T. (02) 9604 8202
www.fowlerscaff.com.au
Mr. Paul Corner

QATAR
JALMAT
Abu Issa Holding - Blue Salon - Suhaim Bin Hamad Street
PO BOX 6255 - DOHA, QATAR
jqa@jalmat.com
www.jalmat.com

SOUTH AFRICA
UNI-SPAN
Formwork & Scaffolding
Plot 50, Witkoppen Road, Northriding
Gauteng. PO Box 426, Banbury Cross, 2164, South Africa
T. (011) 462-8965
F. (011) 462-8986
unispan@uni-span.co.za
www.uni-span.co.za

PORTUGAL
CATARI
NORTH DELEGATION
Zona Industrial da Farrapa
4540-287 Arouca
T. (+351) 256 400 110
mob. (+351) 911 099 000
(+351) 911 130 777
F. (+351) 256 485 197
portugal@catari.pt
www.catari.net



forms for your ideas



ISO 9001
BUREAU VERITAS
Certification



THE FORMWORK SRL

Via Achille Grandi, 7 - 20097 San Donato Milanese (Milano) - Italy

Tel. +39 02 52.75.829 - 02 52.79.974 - Fax +39 02 55.60.02.91

info@theformwork.it | www.theformwork.it